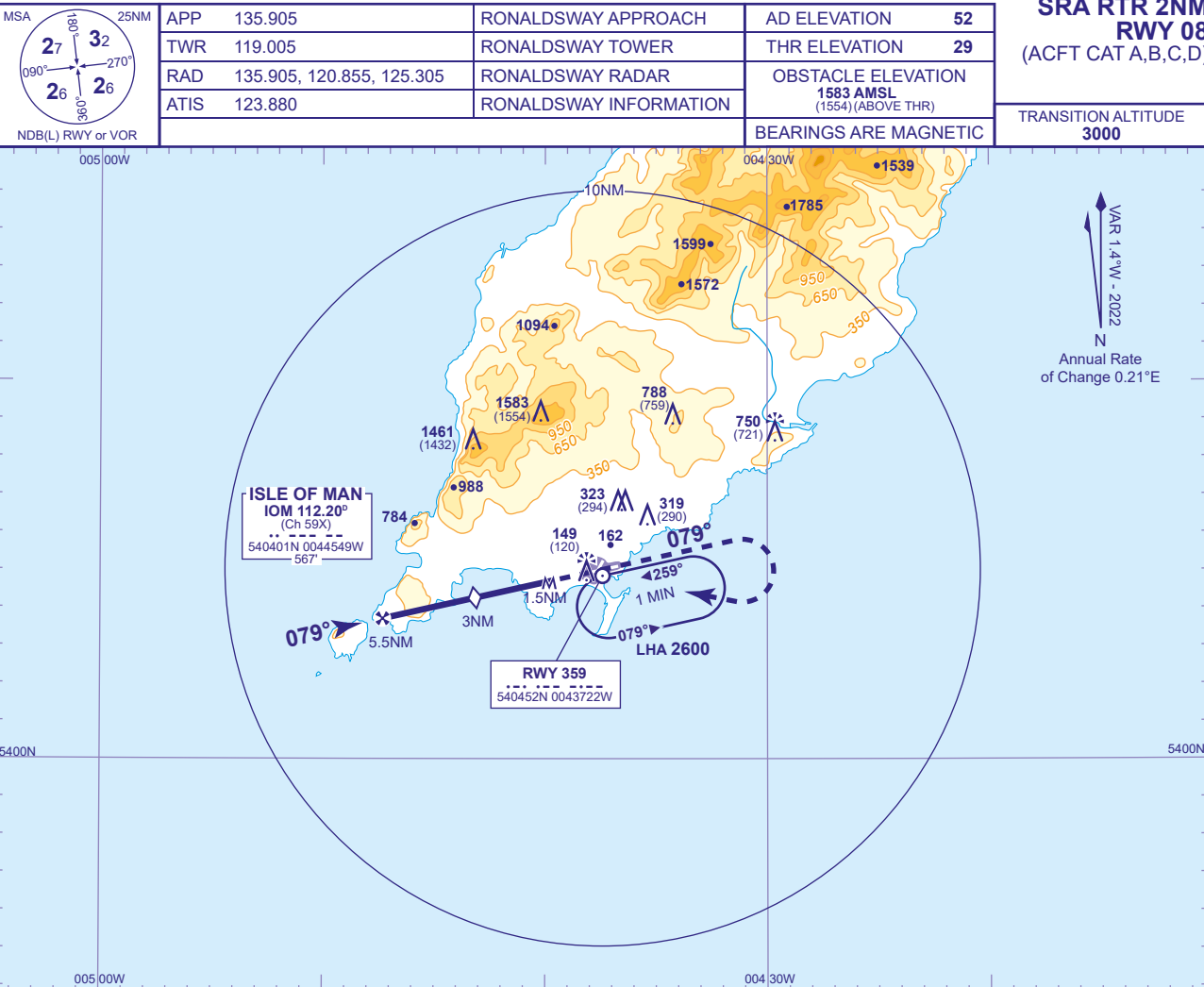
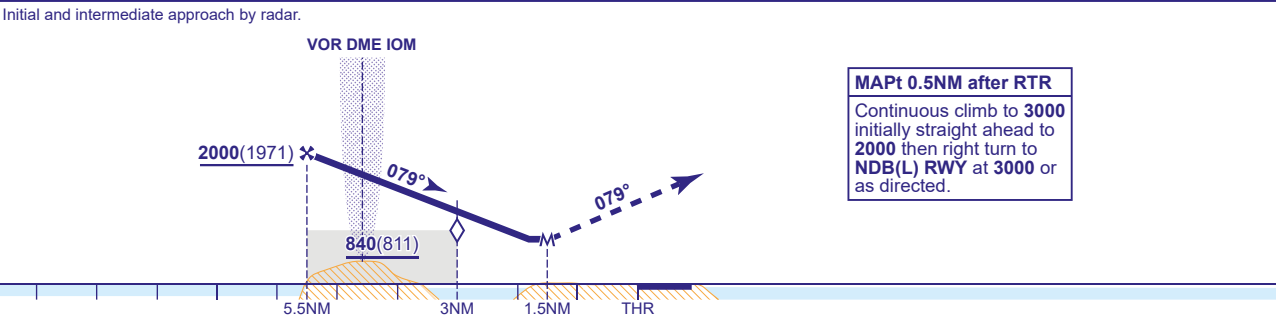


INSTRUMENT APPROACH CHART - ICAO

ISLE OF MAN
SRA RTR 2NM
RWY 08
(ACFT CAT A,B,C,D)



RADAR ADVISORY HEIGHTS Gradient 5.90%, 358FT/NM				
NM	5.0	4.0	3.0 (SDF)	2.0
ALT(HGT)	1820(1791)	1460(1431)	1100(1071)	750(721)



Aircraft Category		A	B	C	D	Rate of descent RTR to MAPt	G/S KT	160	140	120	100	80
OCA (OCH)	Procedure	610(581)	610(581)	610(581)	610(581)		FT/MIN	960	840	720	600	480
VM(C)OCA (OCH AAL)	Total Area	660(608)	760(708)	1980(1928)	1980(1928)		MIN:SEC	0:11	0:13	0:15	0:18	0:23
	South of RWY 08/26	450(398)	550(498)	830(778)	990(938)							
	East of RWY 03/21	660(608)	670(618)	1190(1138)	1190(1138)							

NOTE Aircraft will normally be required to hold not lower than 3000.

CHANGE (9/23): VOR/DME IOM AERIAL ELEVATION.